

RFIC Loadpull Simulations Implementing Best Practice RF and Mixed-Signal Design using an Integrated Agilent and Cadence EDA tool

Jayanta Mukherjee, Jason Parry, Wehhuai Dai, Patrick Roblin
Steven Bibyk, Jongsoo Lee

The Ohio State University, Department of Electrical Engineering

Cadence Design FLOW

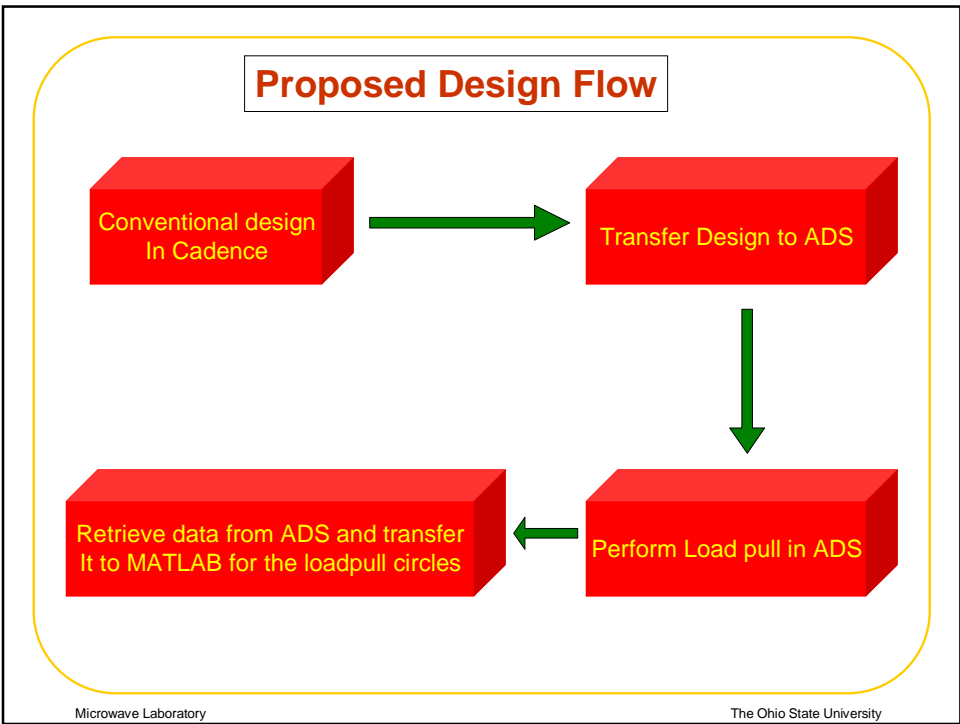
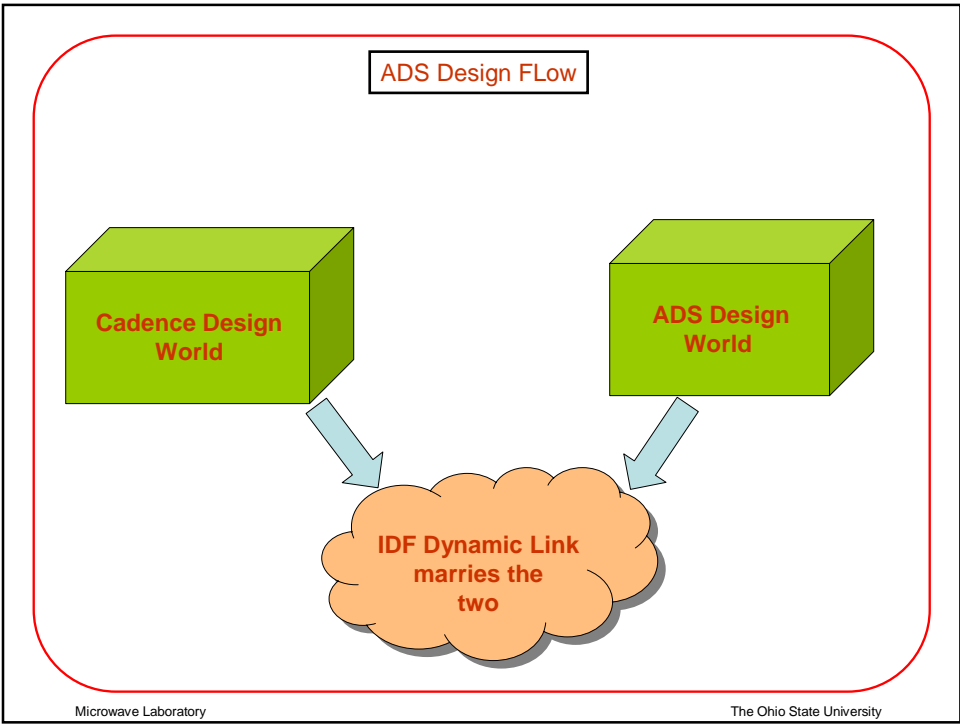
Create Design



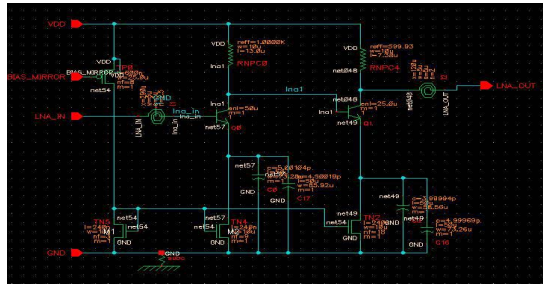
Analog Simulation using
Traditional Design methodologies



Layout



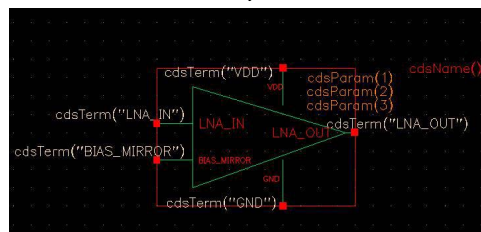
Implementation



Cadence Schematic (IBM 6HP)



Cadence Symbol

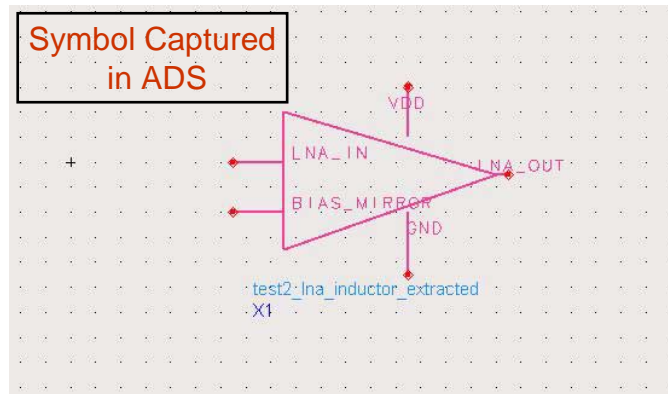


Microwave Laboratory

The Ohio State University



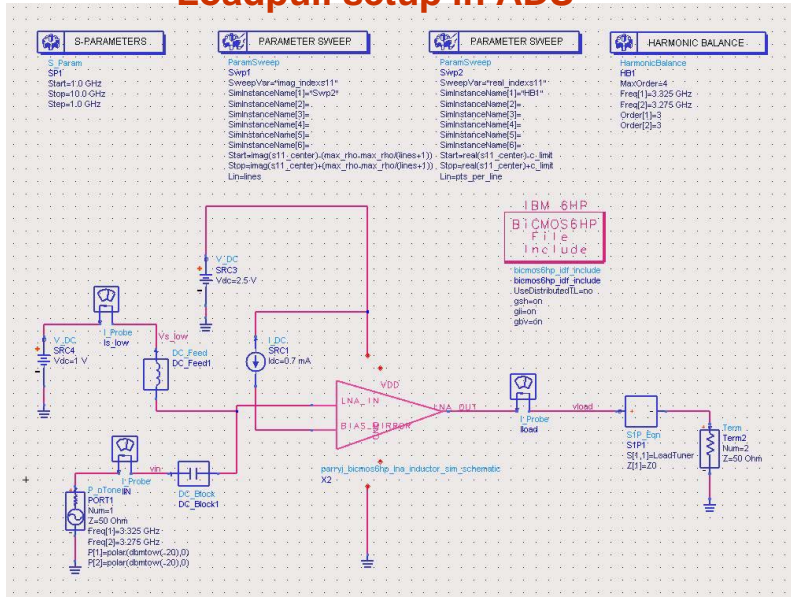
Symbol Captured in ADS



Microwave Laboratory

The Ohio State University

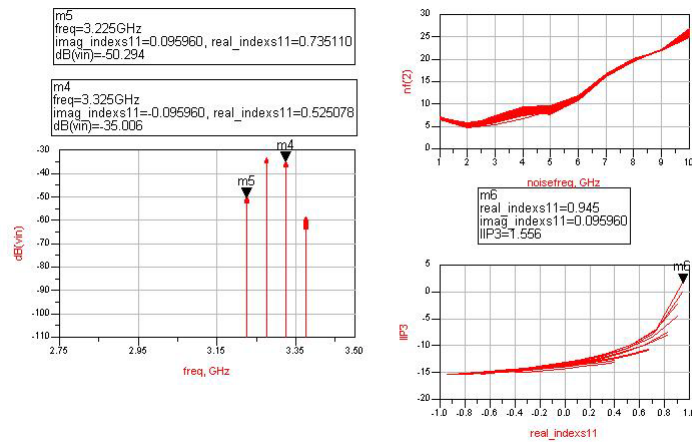
Loadpull setup in ADS



Microwave Laboratory

The Ohio State University

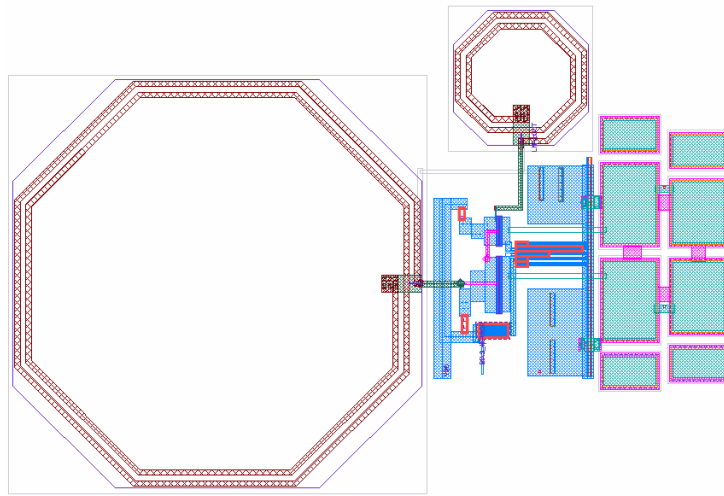
Loadpull Simulation Results



Microwave Laboratory

The Ohio State University

Layout



Microwave Laboratory

The Ohio State University